

CT DEEP **2017**
FISHING REPORT NUMBER 9
6/8/2017



Pumpkinseed (*Lepomis gibbosus*)



YOU CAN FIND US DIRECTLY ON FACEBOOK. This page features a variety of information on fishing, hunting, and wildlife watching in Connecticut. The address is www.facebook.com/CTFishandWildlife.

SHARE THE EXPERIENCE
Take someone fishing

INLAND REPORT

This week marks the 50th Anniversary of “The All American Bass Tournament”, held on June 5, 1967, Beaver Lake Arkansas. This event is considered to be the beginning of modern day Bass Tournaments. Thank you Bass anglers for your support over the years.

LARGEMOUTH BASS fishing is variable, with many fish post-spawn in a number of areas. Places to try include Quaddick Lake, Shetucket River, Lake Lillinonah, Highland Lake, Cedar Lake, Lake McDonough, Congamond Lakes, Bantam Lake, Wyassup Bashan Lake, Beseck Lake (re-filled and producing some fish), Pickerel Lake, Wononskopomuc Lake, Black Pond (Meriden), Silver Lake (Meriden), Mansfield Hollow Reservoir, Candlewood Lake, West Hill Pond, Lake Saltonstall, Mudge Pond, Batterson Park Pond, Burr Pond, Gardner Lake, Moodus Reservoir, Bishop Pond, Pachaug Pond, Billings Lake, Maltby Lakes, Ball Pond, Red Cedar Lake and Winchester Lake.

Tournament angler reports are from Amos Lake (fair), Aspinook Pond (good fishing, 4.14 lb and 3.42 lb lunkers), Gardner Lake (fair at best, not much size, 2.31 lb lunker), Quaddick Lake (fair to good fishing, fish averaged 2 lbs apiece, with a 5.67 lb lunker), Rogers Lake (fair to good fishing, 4 lb lunker), Wyassup Lake (good action, but nothing big, with a 1.96 lb lunker), Bantam Lake (fair to good action, with a 3.94 lb lunker, fish post spawn), Candlewood Lake (fair, 4.97 lb, 4.58 lb, and 4.02 lb lunkers), Highland Lake (fair to good for most, 5.42 lb lunker), and Lake Zoar (fair for most, 2.78 lb lunker).

SMALLMOUTH BASS are reported at Colebrook River Lake, Candlewood Lake (action has slowed), Highland Lake, Bantam Lake and Squantz Pond. **Tournament angler** reports are from Bantam Lake (a few smallmouth in the bags), Candlewood Lake (smallie fishing has slowed, 2.94 lb and 2.78 lb lunkers), and Lake Zoar (fair for most, 3.74 lb lunker).

NORTHERN PIKE fishing is reported to be very good in Lake Lillinonah and good in Bantam Lake and Winchester Lake.

WALLEYE. Some action at Lake Saltonstall, Squantz Pond and Batterson Park Pond.

CALICO BASS AND SUNFISH: Reports of post-spawn mortality

FREE FISHING LICENSE DAYS

CAST IT FORWARD and take someone fishing on one of our two free fishing license days. These will be on Sunday **June 18, 2017** (Father's Day) and Saturday **August 12, 2017** (NCLI and CARE Saltwater fishing event at Fort Trumbull State Park). **Anyone can obtain a free one-day fishing license to fish each of these days.**

The free 1-day license for June 18, 2017 is available through our mobile friendly online [sportsmen licensing system](#). Free Licenses for the August 12 date will be available starting on July 23, 2017.

are starting to become common. Some level of mortality is expected, as the spawning is stressful time, leaving the fish vulnerable to infection and less ability to handle rising water temperatures. Please see our [Post-Spawn](#) fact sheet on our web site. Despite the natural mortality, fishing remains good as fish are “getting back to normal” following the spawn.

CATFISH are providing some nice action at Community Fishing Waters including Freshwater Lake, Birge Pond, Lake Wintergreen, Pickett’s Pond, Mohegan Park Pond, Keeney Park Pond, and Center Springs Pond. Catfish Management lakes like Lower Bolton Lake, Silver Lake, and the Maltby Lakes are also yielding decent and consistent catches. Try live shiners, chunk bait, or night crawlers.

TROUT-LAKES & PONDS - Trout fishing continue to be unexceptional. Places to try include Highland Lake, Lake Wonosopomuc, Mashapaug Lake (Kobra-112&118/flyies at 3 colors/20 feet), West Hill Pond, Colebrook Reservoir), East Twin Lakes (beads at 3-4 colors over 35-40 feet of water), Crystal Lake (tough getting many, target 35-40 feet, 7 colors), Black Pond (Woodstock), Stillwater Pond, Beach Pond, Long Pond, Cedar Lake, and Black Pond (Meriden).

TROUT- RIVERS & STREAMS - In general, flows are high (see *stream flow graphic on page 4*) but conditions for trout remain fairly good due to the cool water temperatures so far this spring. Anglers may want to keep smaller streams and tributaries in mind as they’ll drop quickest should rainfall totals be on the high end (stream flows for a number of areas can be found at <http://waterdata.usgs.gov/ct/nwis/rt>). Across the board there were reports from last week of some decent fishing in major rivers like the West Branch Farmington River, Farmington River, Housatonic River, Blackberry River, Eight Mile River, Natchaug River, Salmon River, Yantic River (TMA), Salmon River TMA, Hammonasset River, Pequonnock River, Naugatuck River TMA, and Pootatuck River.

Farmington River - Fishing has been very good and conditions for the weekend should be as well. West Branch flows are a bit on the higher side (and dropping) but quite fishable (currently 321 CFS at Riverton, with the Still River adding another 166 CFS). The warm to hot weather in the forecast could make hatches “pop”.

Hatches/patterns the main activity is happening late afternoon and early evening with several different insects including black or tan caddis (#18-#20) and a variety of mid-sized mayflies. Patterns to try include *Vitreus* [a.k.a. pale evening dun] #14-16, from 5:00 pm to dark, Tan Caddis (#14-16) good all day, Sulfurs, (*Invaria* #14-16 hatches mid-day and *Dorothea* #16-18), Light Cahill (#12-18), March Brown nymphs (#10-14, during the day), Gray Fox (#10-14, afternoon), Blue Wing Olives (#18-24, mid-late afternoon), Midges (#20-32) and Pale Evening Duns (*Epeorus vitreus* #14-16, afternoon & early evenings). March Brown, Sulphur & Rusty Spinners are falling in the evenings.

Housatonic River - Fishing was good last week and should be fair to good this weekend with flows that may be challenging for some to wade. Currently, flows are leveling off after rising due to last week’s rains (1,980 CFS at Falls village and 2,790 CFS at Gaylordsville) and are still a bit turbid. Morning water temperatures middle to upper 60’s°F (and should climb a bit through the weekend). Insect activity is very high with large spinner falls in the afternoon/evening.

Hatches/patterns include Sulphurs (#14-18, evening), Blue Wing Olive (#16-18, cloudy days, early morning; spinner fall in evening), Cahill (#14, evenings), Adams (#12-16, evening), March Brown (#10-12, afternoon) and

REMINDER TO ANGLERS-

FISHING IN OR CASTING INTO PERMITTED SWIM AREAS IS PROHIBITED.

State regulations prohibit fishing in or into a swim area that has been permitted by DEEP. Additionally, vessels cannot be operated within a permitted swim area, and there’s a 100 foot “no-wake” zone around the perimeter. Swim areas that have been permitted by DEEP will be marked by white buoys with orange markings, and there should be a permit number posted on the buoys. They may or may not have small orange barrier floats to further demarcate the area. Should questions arise concerning the validity of the swim area (*no permit numbers or the area appears to have been changed/enlarged or keeps moving*), please contact DEEP’s Boating Division at 860-434-8638.



Gray Foxes (#14-16). Green caddis (#14-18, early morning & evening) are on the water. Go under the surface with wooly buggers or a variety of flashy streamers (to get the big 'bows interested).

CONNECTICUT RIVER

Flows had been close to typical levels but have increased to levels difficult to boat and fish. Flows are dropping again, but remain turbid. Mostly schoolie **STRIPED BASS** were being found in the river, except at the mouth where some spotty but good catches are reported. Finding a school of bunker will help you get onto the jumbo bass. **AMERICAN SHAD** were still providing some action around the Farmington River last week. **CARP** continued to provide steady action as this fishery never disappoints. Will this be the year for the new state record fish?. Pre-baiting your selected site is a great way to increase catches. Boilies, pack, pop-up rigs and barbless hooks are working and allowing anglers to release their catch to get bigger. **CHANNEL CATFISH/WHITE CATFISH** were providing steady action in the Connecticut River in Kenney Cove, the Haddam Meadows area, and Salmon River Cove. Check out the photos being posted to our **CTFISHANDWILDLIFE** Facebook page (www.facebook.com/CTFishandWildlife) of 4-6 pound cats.

SPECIES SPOTLIGHT:

Bowfin are native to North America and range throughout most of eastern United States from the Mississippi River drainage to the St. Lawrence River drainage in the north and from central Texas to Florida in the south. They are not native to the Atlantic coastal states north of Virginia.

Here in Connecticut, Bowfin were illegally introduced into a private pond in Wolcott in 1976. Although this population was eradicated the following year, bowfins were caught in gill nets in the Scoville Reservoir (Wolcott) in 1980, and a single specimen in Chapman's Pond, a cove of the Connecticut River (East Haddam) in 1987.

Bowfin prefer shallow, weedy lakes and slow moving rivers. Spawning occurs in the early spring when water temperatures reach 60-66 F, and males guard the nest and young until they reach about 4 inches in length. Like many species that offer parental care, male bowfin are very aggressive during this time, consequently they are easier to catch on hook and line. Bowfin grow quickly, reaching 16 inches in about two years. Reports of catching 25-30 inch fish from the Connecticut River are becoming more and more common. It is legal to fish and keep Bowfin (dead – possession of live fish is prohibited). There is no current state record (min weight 7 pounds) and a trophy is considered greater than 24 inches (see trophy fish award program below).



1 Male (top) and Female (bottom) Bowfin. Each are about 40 cm or 15.7 inches.

TROPHY FISH AWARD PROGRAM:

DEEP's [Trophy Fish Award Program](#) recognizes angler skill by awarding a bronze pin for your first trophy fish, a silver pin for your fifth trophy fish, and a gold pin for your tenth trophy fish. Angler of the year is awarded at our annual Trophy Fish Award Ceremony.

To see if your fish qualifies check out the criteria on page 13 of the [Angler's Guide](#). If you have caught a trophy fish be sure to fill out the affidavit (page 12 of the Angler's Guide) and submit the required photo(s) and form to us. Good luck!

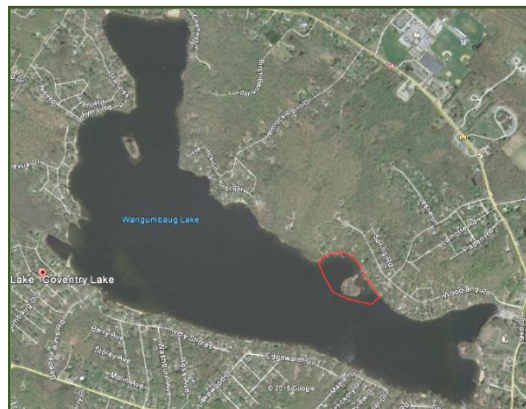
NOTES & NOTICES:

BRANFORD RIVER (boat launch). The Branford River state boat launch continues to be closed for renovations. Alternative nearby launch sites include the Guilford Town boat launch and the East River State boat launch, both in Guilford.

CONNECTICUT RIVER (invasive species alert). Hydrilla was recently found in the main stem Connecticut River in Glastonbury (near Glastonbury's Riverfront Park & Boathouse). See the Coventry Lake entry below for what river users should do to prevent spread of this invasive plant to other waterbodies.

COVENTRY LAKE (invasive species alert). Hydrilla, a very highly invasive aquatic plant, has been found growing in Coventry Lake. All lake users should take extra care to check and clean their boats (including canoes, kayaks and rowing sculls), trailers, and fishing equipment before leaving the boat launch, or leaving the lakeshore.

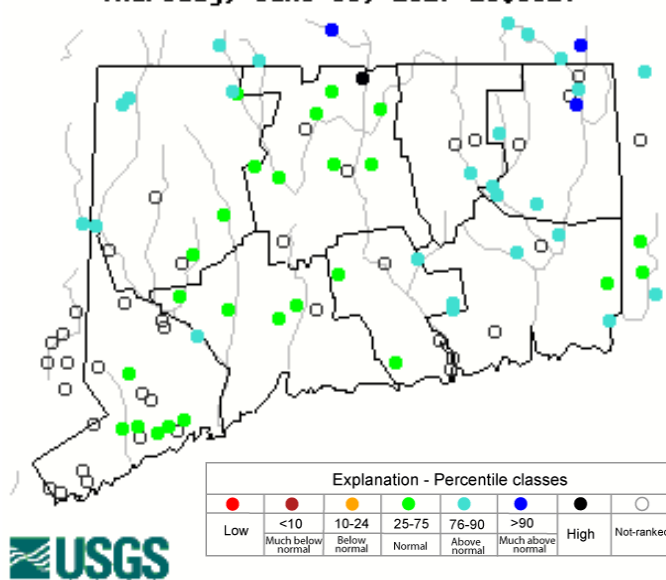
Coventry Lake (Wangumbaug Lake) boaters should avoid the area outlined in red to avoid fragmenting and spreading hydrilla. This is only area in the lake where hydrilla has been found.



for

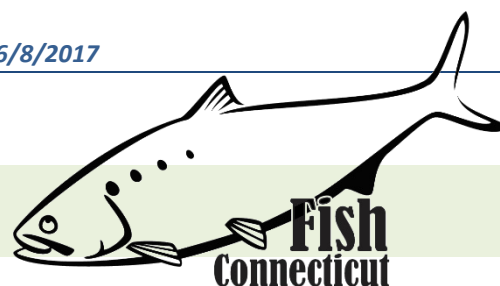
GLASGO POND - A canoe/kayak race event is scheduled Sunday, June 11th, from 9:30 am through 1:30 pm. Boaters should use extra caution during the event (the course laps both Glasgo Pond and Doanneville Pond). Although this event will be using the state boat launch on Glasgo Pond, room will be available to the general public to launch. Boaters should however use additional caution on the lake.

HOUSATONIC LAKE (rowing regatta). A rowing event is scheduled for **Saturday, June 6th from 7:00 am to 6:00 pm.** Boaters should use additional caution on the lake.

Stream flow conditions**Thursday, June 08, 2017 15:30ET**

Data in the state graphic to the left are generated by the United States Geologic Survey (USGS) and are available on line at: <http://waterdata.usgs.gov/ct/nwis/rt>. A percentile is a value on a scale of one hundred that indicates the percent of data in the data set equal to or below it. For example streamflow greater than the 75th percentile means only ¼ of the streamflow values were above the value and thus would be considered "above normal". Stream flow between the 25th and 50th are considered to be "normal flows" and those 25th or less are considered to be "below normal".

MARINE FISHING REPORT



Surface water temperatures in Long Island Sound (LIS) are around 60 °F. Check out the following web sites for more detailed water temperatures and marine boating conditions:

<http://www.mysound.uconn.edu/stationstat.html>

http://marine.rutgers.edu/mrs/sat_data/?nothumbs=1

<http://www.ndbc.noaa.gov/>

<http://www.wunderground.com/MAR/AN/330.html>

STRIPED BASS fishing continues to be good around the full strawberry moon. Fifty pound bass have been caught from Milford to Mystic. Striped Bass are in, there are big numbers from Stratford to Execution Rock off Greenwich. A variety of baits and lures are working but best catches this week anglers had used mackerel, bunker, spoons, Mojo rigs - and customers are catching Stripers this week from shore and jetties. Stripers are red hot and they are gulping up Cotton Cordell Pencils at Seaside Park, Silvers Sands State Park, Burying Hill in Southport as well as New Haven. Daiwa S P Minnows have also proved outstanding. Norwalk's Calf Pasture Beach Pier has been outstanding late May and expected to continue in June. Striper spots include Hempstead, Mamaroneck, Execution Rocks, Stepping Stone, the Weather Buoy, Can 32A, Pawcatuck River, Mystic River, Thames River, Niantic River, lower Connecticut River (**DEEP Marine Headquarters fishing pier and Dock and Dine**), Black Hall River, New Haven Harbor (Sandy Point), **Housatonic River and Norwalk/Saugatuck Harbor** including the islands. Try trolling bunker spoons on the reefs or better yet toss a chunk of bunker. Sand and blood worms have been working the best for "schoolie" bass. Casting swimming lures (SP Minnow – bone & sand eel color), small jigs (chartreuse color) with twister tails, soft baits, and Kastmasters and other metal lures will all work. The evening/night bite is fantastic with bait, including eels. The top-water fishing continues to be fantastic...Cotton Cordell pencil poppers in bone, blue back or black color.

SUMMER FLOUNDER (fluke) fishing is good and getting better each day with the arrival of squid. Montauk is fishing better than Block Island or Fishers Island. As squid continue to enter Long Island Sound...fishing will only get better. Fluke are loaded up from Westport to Norwalk Islands several doormats 10-12 pounds. Most recent 12-pounder was caught off Compo Beach using a Soro Bucktail w/ a Gulp attached. Also doormats are being caught by using Spro Bucktail tipped with Squid. Mid-sound anglers reported fluke from 2 to 9 lbs being common. Fluke really exploding Norwalk to New Haven with Bucktails tipped w/ Gulp and Spearing in shallow water. Fluke spots include the typical locations: Smittown Bay, Buoy #26, south shore of Fishers Island (Isabella Beach, Wilderness Point), Napatree Point and along the beach, off the Stonington breakwater, mouth of the Mystic River to Groton Long Point, Thames River channel, Two Tree Island channel, Black Point/Niantic Bay/River, Long Sand Shoal, Westbrook-Clinton area, Falkner Island area, West Haven to Woodmont, New Haven Harbor including by the breakwaters, off the mouth of the Housatonic River, and around the Norwalk Islands. Since squid are coming in, offering a live one on the bottom (10-40 feet) would be a good move for catching that big slab "doormat" fluke! Try drifting with a white or pink Spro Bucktail jig with a Berkely 3"- 4" Gulp Mullet in chartreuse, white or pink color. Fresh squid and or silversides (spearing) have also been producing. **Minimum size is 19 inches and the daily creel limit is 3 fish per person.** fishing season opens May 17 to September 21. Time to get the boat, and fishing gear ready for some phenomenal early season fluke fishing. [CT Bait & Tackleshop List](#)

BLACK SEA BASS fishing is good and getting better in LIS. There a lot of big sea bass in the sound. BSB are everywhere but they are loaded up at buoy 32-A, and best lure/bait this week has been clams/sand worms. It's going to be a great year! The early season hot spots are Falkner Island, the Middlegrounds, Buoy 32A, Green Ledge Lighthouse, Cockenoe Islands, Six Mile Reef and from New Haven to Woodmont. Fishing over any deep water structure in 30 to 100 ft around slack tide will produce some trophy-sized "humpbacks". Fish

shallower and you will catch plenty of keeper-sized sea bass. It's important to continue to move from structure to structure to find these beautiful and awesome eating fish. Remember, **CT black sea bass regulations are as follows...15 inch min. length, 5 fish daily limit from May 1st to December 31st**. Berkely Gulp (swimming mullet) on a jig along with squid and a spinner works great for these "Bucketmouths".

SCUP (porgy) fishing is good in Long Island Sound. Most of the scup have finished spawning and now are migrating to their feeding grounds throughout the Sound. Sand worms and clams on a high-low rig has been the winning ticket and trophy-size Scup being caught at Greens Ledge Lighthouse and Eaton's Neck. Scup are really coming in thick in Long Island Sound, boats have been hitting them w/ squid, clams and sand worms. Many reports coming in from boaters having great action at Middle Passage, Norwalk Islands and Port Jefferson. Time to plan a trip on the many wonderful party/charter boats in CT. [CT Party Boat Association](#). Giant porgies measuring 14-19 inches ("hubcap size") have been caught! Porgy fishing has also been reported at these shore fishing locations: Todd's Point, **Sherwood Island State Park**, Rocky Neck State Park, Meigs Point Hammonasset State Park and Fort Trumbull State Park. Locate your favorite [Enhanced Shore Fishing Opportunities](#) for these excellent eating "Reef Slammers". These "panfish of the sea" are easily caught on sandworms/cut squid or any other small piece of bait. Contact your [local bait and tackle shop](#) for updated fishing information.

WEAKFISH the bite is on and consistent from West Haven to Guilford, especially at night using plastic baits and swimming lures. Other locations to try are...Branford/Guilford/East Haven/West Haven/New Haven Harbor (Sandy Point) over to the Woodmont/Milford/Stratford area along with the Peconics (NY).

BLUEFISH fishing continues to be excellent. The Race, Millstone Outflow, Plum Gut and the north side of Long Island including Gardiners Bay and the Peconics are the early season hotspots. Most of the local Long Island Sound reefs have many harbor-sized blues cruising around them.

STRIPED SEAROBIN fishing is good in LIS for this "hardhead fish with spines and large pectoral fins". These beautiful and strange looking fish are now very common especially when bottom fishing at many of Connecticut's shore fishing sites. With many fish measuring over 20 inches, 3 pounds and "barking up a storm" (grunting noise they make when handling them). They love sandworms, squid and any live or dead bait. They are also very good to eat. Please be careful when handling them...be mindful of their spines located on top of their head and gill cover.

HICKORY SHAD fishing is fair in the lower Connecticut River by the DEEP Marine Headquarters fishing pier and by Dock and Dine (Old Saybrook). Connecticut tarpon (hickory shad) can be found mixed in with schoolie striped bass. Flood or ebb tide is best and lures of choice are a willow leaf (silver), Kastmaster (single hook), small plastic jigs (white or chartreuse), and or shad darts in various colors.

WHITE PERCH fishing is improving in the coves along the Connecticut shoreline. White perch have finished spawning and moving to key feeding locations. Perch spots include the Pawcatuck River, Mystic River, Thames River, upper Niantic River, lower Connecticut River (DEEP Marine Headquarters fishing pier), Black Hall River, Lieutenant River, North/South Cove and Hamburg Cove. Shrimp and small worms (small piece of sand worm) are the keys to success. Fish the coves and back bays (slack water).

The Connecticut Department of Energy and Environmental Protection is an Affirmative Action/Equal Opportunity Employer that is committed to complying with the requirements of the Americans with Disabilities Act. Please contact us at (860) 418-5910 or deep.accommodations@ct.gov if you have a disability and need a communication aid or service; have limited proficiency in English and may need information in another language; or if you wish to file an ADA or Title VI discrimination complaint.

DEEP WEEKLY Fishing Report



Connecticut Department of
ENERGY & ENVIRONMENTAL PROTECTION

79 Elm Street, Hartford, CT 06106
www.ct.gov/deep